

Simple Rollovers in Fireworks 4



Rollover viewed in browser

You'll need two images for this piece. To simplify the process, open both images in Photoshop or Fireworks and make the images the same size. (check their pixel dimensions using Image > Image size in PS and Modify > Image size in FW).

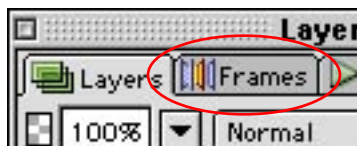
1. Open the rollover image in Fireworks using **File > Open**.
2. Add a second image that covers the rollover image:
 - a. Choose **File > Import**
 - b. **Select** an image to import,
 - c. Click **Open**
 - d. The cursor will change to a small right angle, **click to place** the image. Move the image you just placed so that it overlaps the first image.



Layer palette

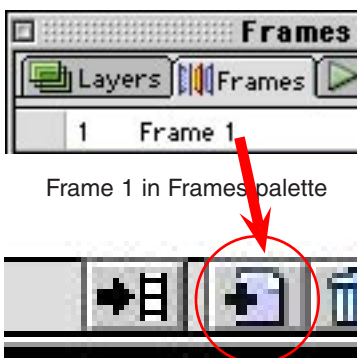
A layer was added for the new image in the layer palette. Next we'll add a frame. With two frames, we can use the layer visibility to show one layer in one frame and the other layer in the second frame.

3. Adding a frame and setting layer visibility:
 - a. Click on the **Frames Tab** in the Layers palette or choose Window > Frames.
 - b. **Drag and drop Frame 1** in the Frames palette onto the new frame / dupe frame button at the bottom of the palette.
 - c. **Select Frame 2**.
 - d. Click on the Layers palette. **Turn off visibility for the top bitmap** by clicking on the eyeball in the layers palette.



Frames tab in Layer palette

Switch back to the frames palette and click on Frame 1 and Frame 2. Each frame should now show a different image. The layer palette now looks like this for each frame:



Frame 1 in Frames palette

Duplicate Frame in Frame palette



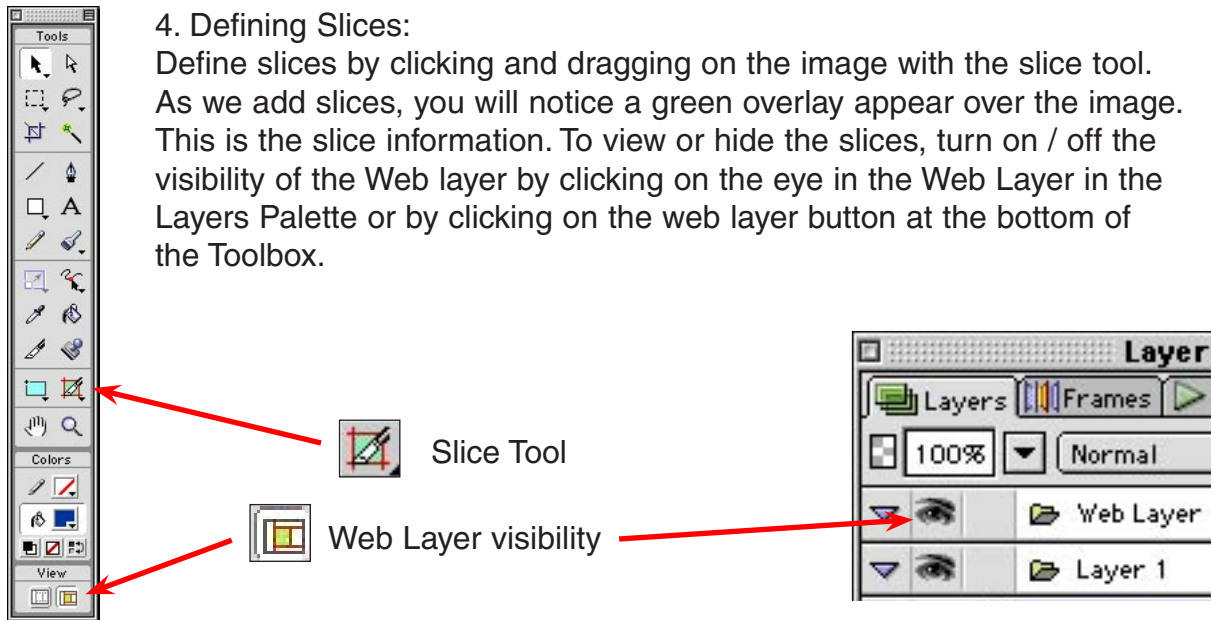
Layer palette for Frame 1



Layer palette for Frame 2

We could just add a rollover behaviour and be done. But to add more interest, we will add slices. Then when the mouse rolls over the image it will only reveal parts of the image rather than swapping out the whole.

4. Defining Slices:
Define slices by clicking and dragging on the image with the slice tool. As we add slices, you will notice a green overlay appear over the image. This is the slice information. To view or hide the slices, turn on / off the visibility of the Web layer by clicking on the eye in the Web Layer in the Layers Palette or by clicking on the web layer button at the bottom of the Toolbox.



The image shows a screenshot of the Photoshop interface. On the left is the Tools palette with the Slice Tool highlighted. A red arrow points from the Slice Tool icon to a label 'Slice Tool'. Another red arrow points from the 'Web Layer visibility' icon (a small grid) to a label 'Web Layer visibility'. On the right is the Layers palette, showing the 'Web Layer' with its visibility icon (an eye) highlighted by a red arrow.

* It is easiest to define a slice if you open the image window large enough to see some grey area around the image. Begin your slice by clicking in the grey area above the image and release in the grey area below the image.

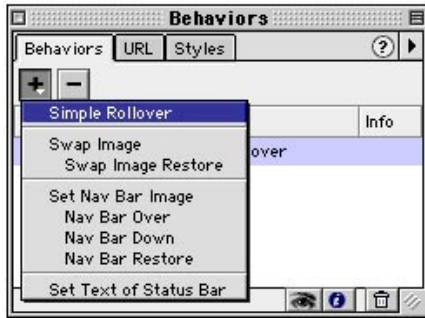


**** Make sure the slices don't overlap.**

It is easiest to draw the **first slice from left to right** then draw the **subsequent slices right to left**. The Slice Tool will snap to the last slice you drew.

******* To remove a slice, simply select it using either the Pointer (back arrow) or Subselection Tool (white arrow) and hit the delete key. Once you have covered the image in slices, go to step 5.

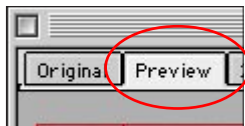
5. Add a Javascript Rollover behavior to swap images when mouse rolls over:
 - a. Choose **Window > Behaviors** to make the Behaviors palette visible.
 - b. Select one slice, shift click the remaining slices until all are selected. With all the slices still selected, click on the plus sign in the Behavior palette and choose **Simple Rollover**.



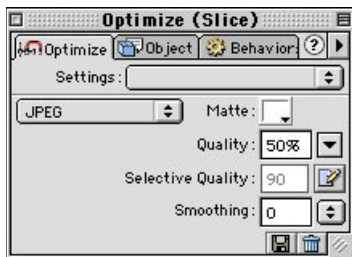
Adding a Rollover to a slice



Rollover added

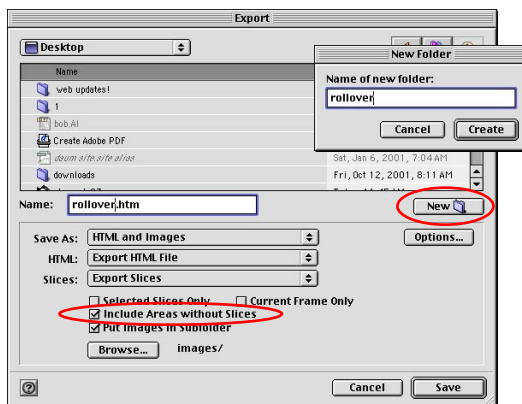


Preview the rollover by clicking the **Preview Tab** in the document window. Roll your mouse over the image and watch it swap. The **F12 key** will launch your browser and show your rollover in a temporary page.



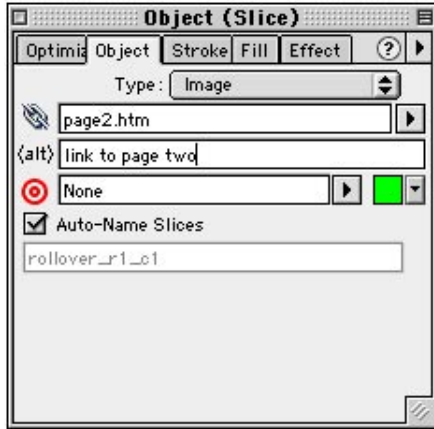
6. Pick a format for optimization:
 - a. Click on the **Original tab**.
 - b. Choose **Window > Optimization** to make the Optimization palette visible.
 - c. **Select all the slices** with a marquee select. Choose GIF or JPEG depending when slicing up a graphic or a photo. For this exercise, choose **JPEG at 50% quality**.

* I recommend that you play with the quality settings and note their effect in the preview tab of your image's window. Compare the download time (upper right hand corner) and image quality as you raise and lower the quality.



7. Export your slices!
 - a. Choose **File > Export**.
 - b. Click on **New Folder** to create a new folder to save your export since this will create an html page and many images.
 - c. Name it rollover, click create
 - d. Check **Put images in subfolder**.
 - e. Click **Save**.

Open up the export folder on your desktop and double click the html page to view your work!



To link a slice to another page or another image:

- a. Make the web layer visible (see step #4)
- b. Select a slice.
- c. Choose **Window > Object** to make the Object palette visible.
- d. Type a file name of a page (page.htm) or an image (image.jpg) or a site (<http://www.supercoop.org>) in the URL window.

* Make sure the image file or html is in the same folder as the rollover. Otherwise you will need to designate exactly where it is. If it is in a folder one level above make you'll need to start the link with two dots and a slash **../page.htm** or **../image.jpg**. If it is in a folder inside the folder that holds your slice page then name the folder like this **folder/page.htm** or **folder/image.jpg**. Be sure to correctly spell the file name note if it is upper case or lowercase since web servers are case sensitive.